



Truck Mounted Log Loaders
Designed And Built In Canada!



**Model
1028**

Maximum rated lifting capacity @ 10 foot radius: 28,000 lbs.

- Boom Reach: 25 feet

<u>Cylinders</u>	<u>Bore / Rod</u>
Boom	7" X 3.5"
Jib	6" X 3"
Stabilizers	6" X 3"

- Normal Operating Pressure: 2,500 psi
- Main Boom, Jib Boom and Cylinder Pins: 2.5" Diam.
"Super Impacto" case hardened to Rc50
(Tough core, hard surface)
- Turntable Bearing: 39"
- Reservoir Capacity: 112 (US Gal.)
- Hydraulic Pump Rated Flow & Pressure
@ 1200 RPM: 75 gmp @ 3000 psi

Vanguard Cranes Inc.
20130B Stewart Crescent
Maple Ridge, B.C. Canada V2X 0T4
Phone: 604-465-1335 Fax: 604-465-0282
Email: sales@vanguardcranes.com
Web: www.vanguardcranes.com



**Truck Mounted Log Loaders
Designed And Built In Canada!**



**Model
1028**

Available Options (* = recommended)	
Chelsea 440 PTO	* Chelsea 880 PTO
Aluminum Alberta Wide Load Clearance Lights	Aluminum Toolbox, Driver Side with Chainsaw Extension
Aluminum Toolbox, Passenger Side	Steel (Sloped Lid) Toolbox, installed behind Picker
Premier Pintle Hook on Tower	Operator Brush Guard
Swinglock Assembly (Single)	Swinglock Assembly (Dual)
* Front Bumper Reinforcement	Telescoping Stabilizer Arms c/w Hydraulic Cylinders & Controls
Float Valves installed on Swing and Main Boom	Single Rail Frame Insertion (if required)
* (1) twin electric fan oil cooler	(1) automatic electronic fan-control for cooler
Extra Lights on Boom (Qty 2)	Continuous Rotation Tower (Including Electric Swivel)
Chrome Cylinder Package	
Grapple Options	
38" 370° Non Continuous Rotation	
44" 370° Non Continuous Rotation	* 44" Continuous Rotation
1/3 Cord Pulp 370° Non Continuous Rotation	44 " Twin Pin 370° Non-Continuous Rotation
1/3 Cord Pulp Continuous Rotation	44 " Twin Pin Continuous Rotation

Vanguard Cranes Inc.
20130B Stewart Crescent
Maple Ridge, B.C. Canada V2X 0T4
Phone: 604-465-1335 Fax: 604-465-0282
Email: sales@vanguardcranes.com
Web: www.vanguardcranes.com

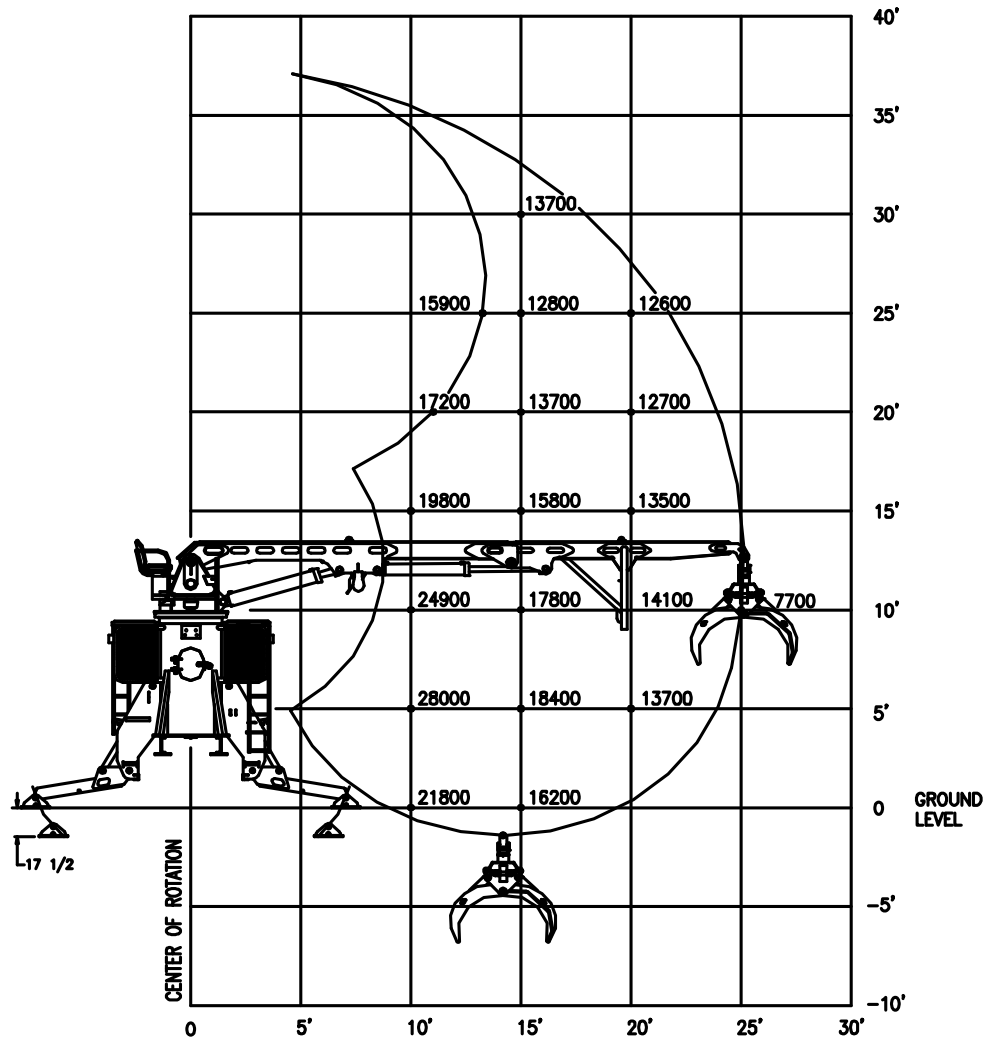


VANGUARD
CRANES INC.
*Truck Mounted Log Loaders
Designed And Built In Canada!*



Model 1028 Load/Range Chart

**Model
1028**



Vanguard Cranes Inc.
20130B Stewart Crescent
Maple Ridge, B.C. Canada V2X 0T4
Phone: 604-465-1335 Fax: 604-465-0282
Email: sales@vanguardcranes.com
Web: www.vanguardcranes.com